

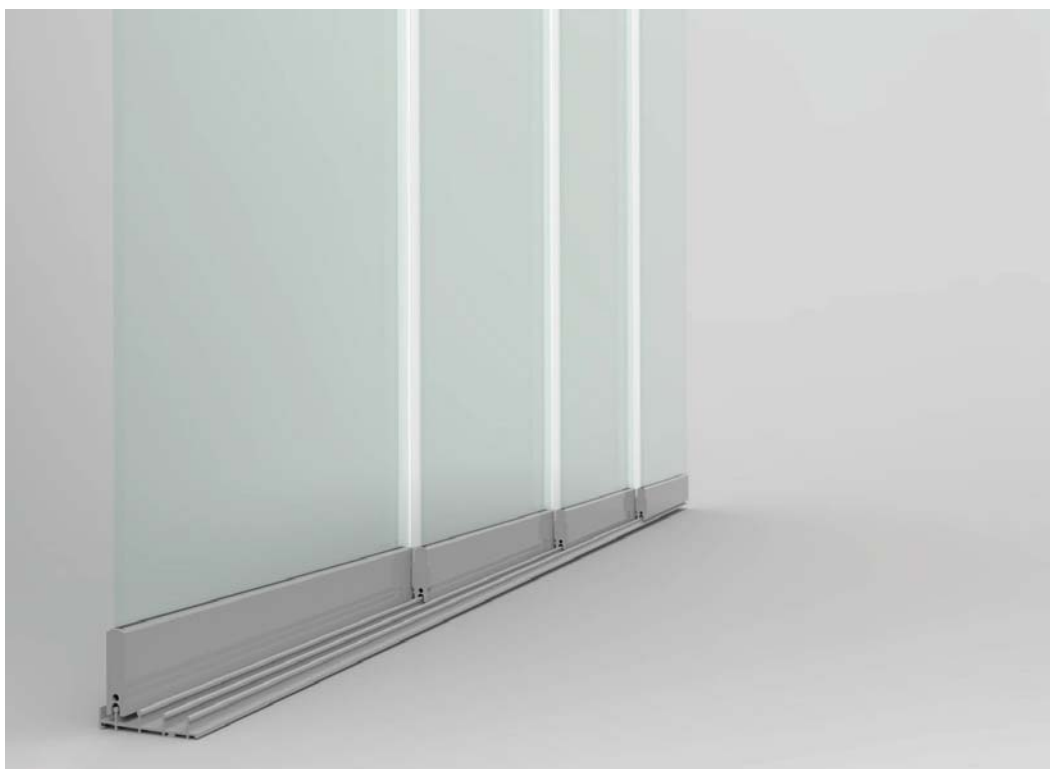


Technical details

## ■ System detail

MN STEKLO SLIDE is the new multitrack frameless system where the panels slide horizontally thanks to its double wheel carriage.

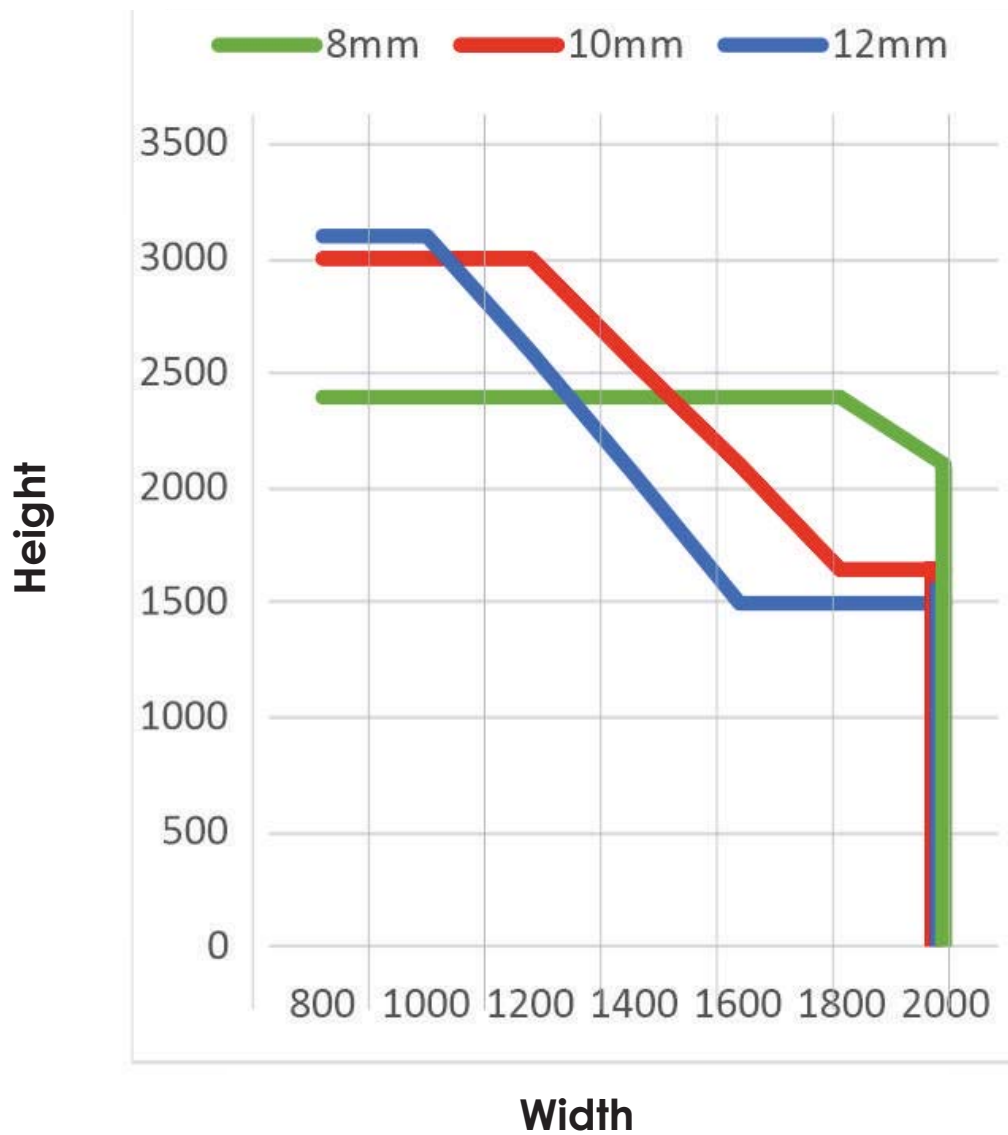
The system arrives to a maximum height of 3.10 m with a minimum track width of 68 mm depending on the configuration of the project (number of installed tracks).

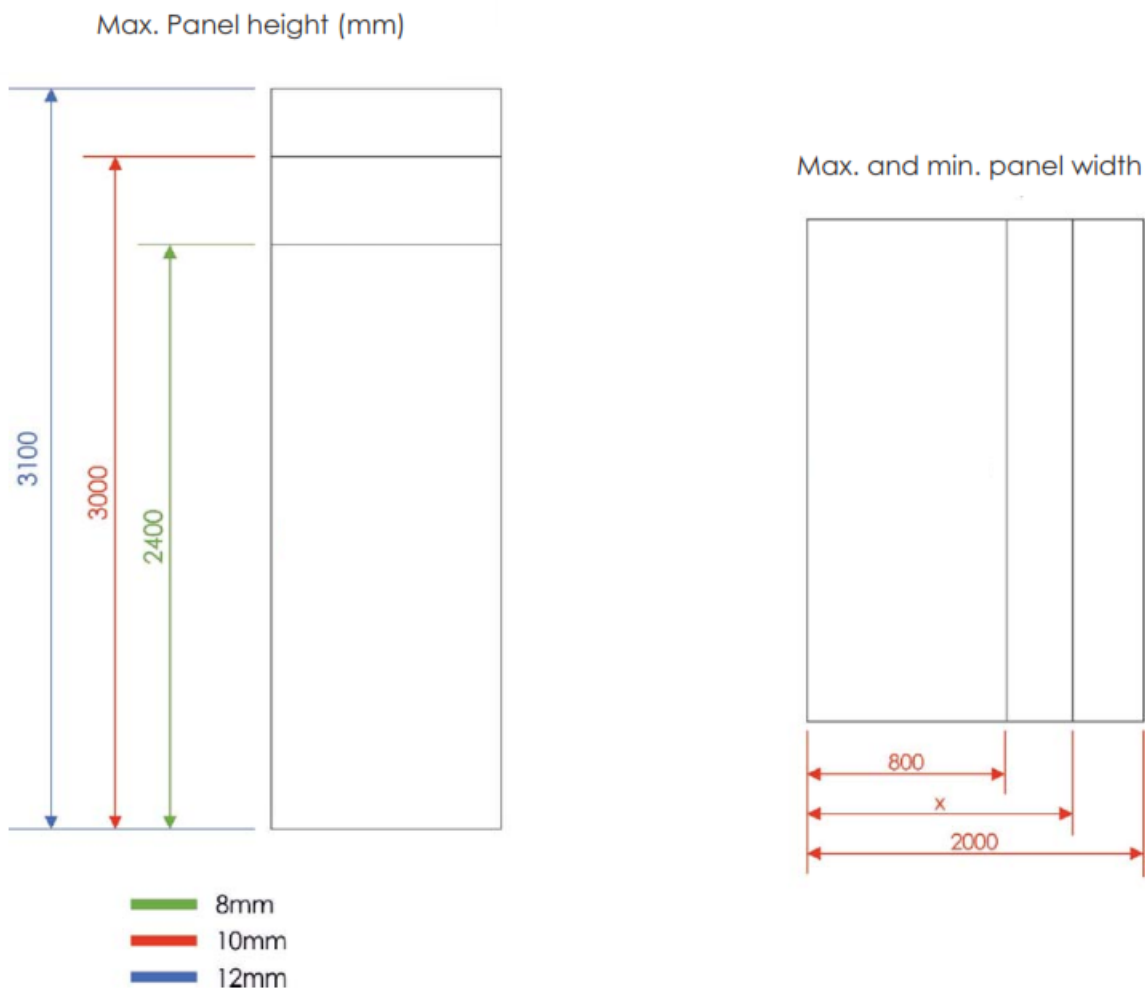


## ■ Panels

The minimum number of panels is two, and it can be increased unlimitedly installing contiguous individual tracks. MN STEKLO Slide can be installed with three different glass thicknesses (8, 10 and 12 mm) and can be either laminated or tempered. The size of panels must be within the ranges shown in the following diagram.

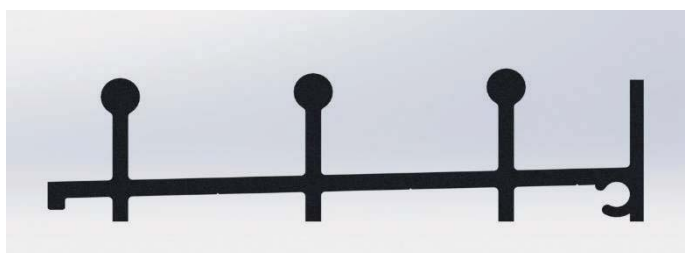
Maximum dimensions of panels (mm)



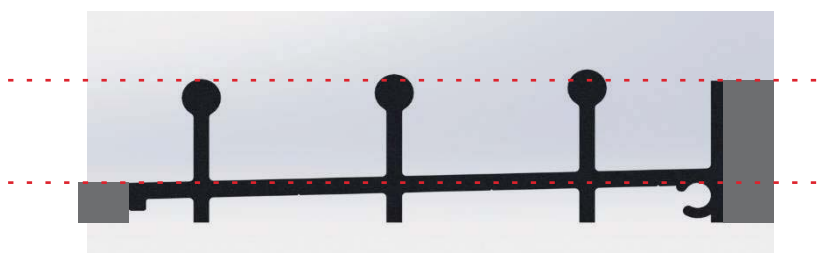


## Tracks and profiles

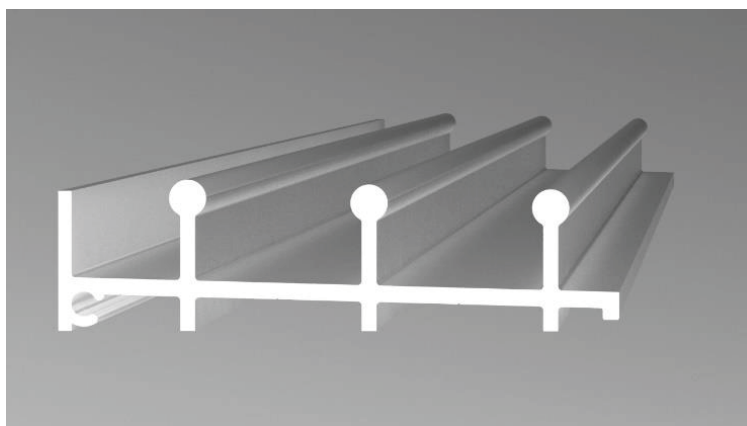
The bottom track is thought to allow the drainage thanks to its slight inclination. It can be also installed sunken.



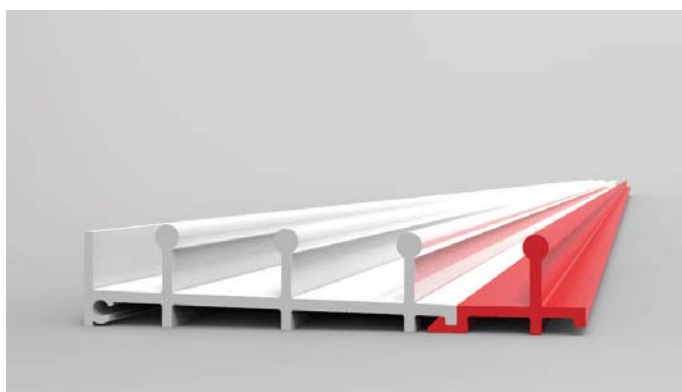
*Detail of the inclination of the bottom track*



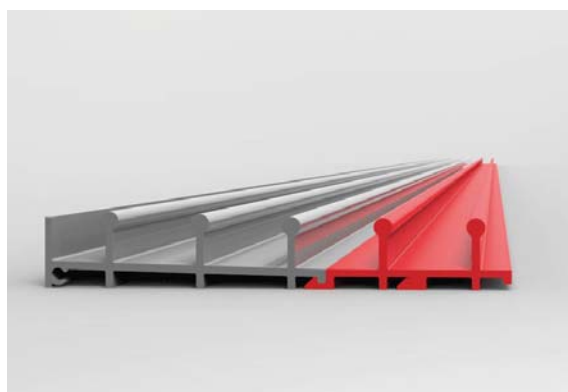
*Detail of a sunken installation*



*Detail of the bottom track*

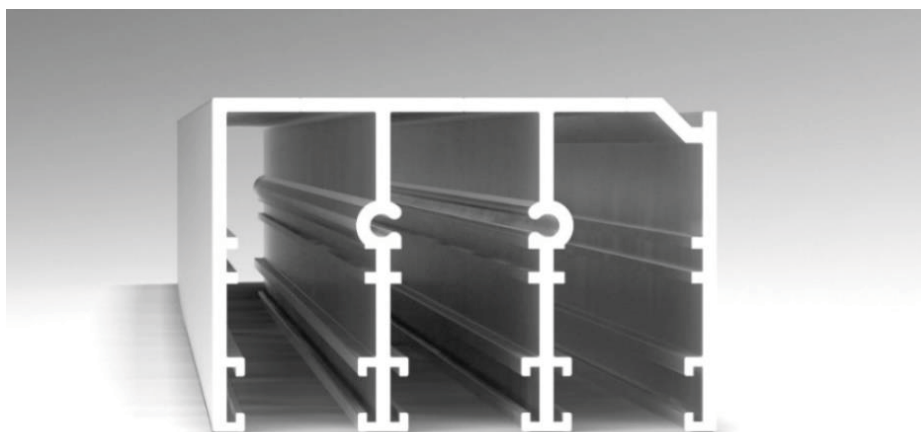


*Detail of the bottom track extension*



*Detail of the bottom track with two extensions*

The top track has a clearance of up to 20 mm in order to compensate an eventual unevenness at site.



*Detail of the top track*



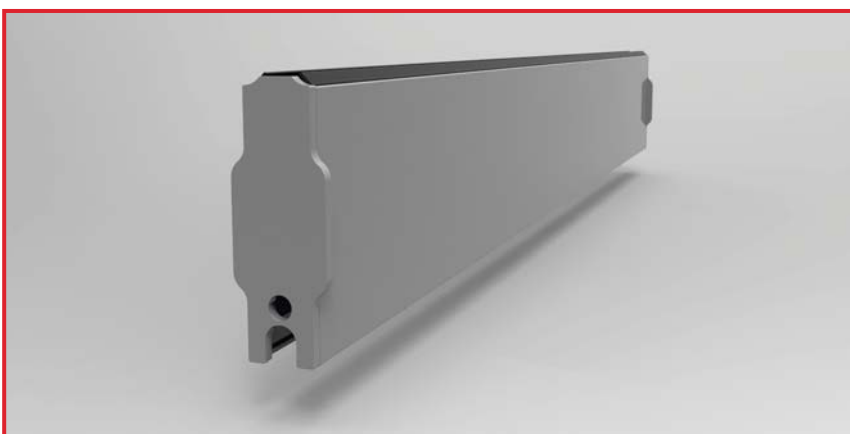
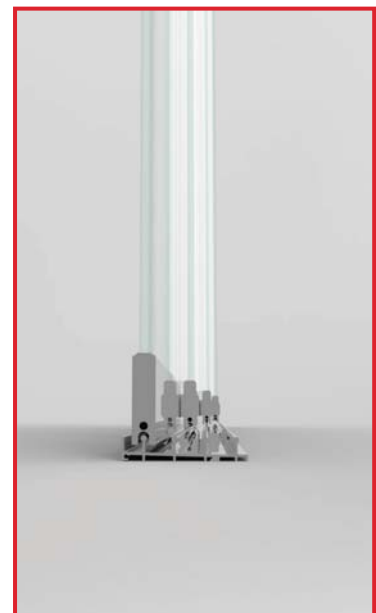
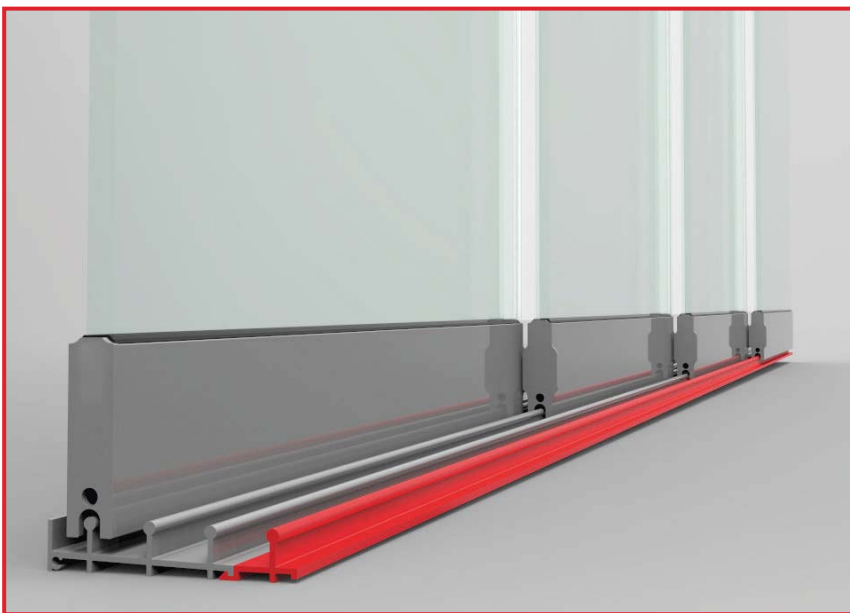
*Detail of the top track extension*



*Detail of the top track with two extensions*

## Horizontal sliding

Each panel is supported and moved by two double wheel carriages which allow panels of up to 90 kg weight. These double wheel carriages are hidden and can be adjusted 5 mm in height.



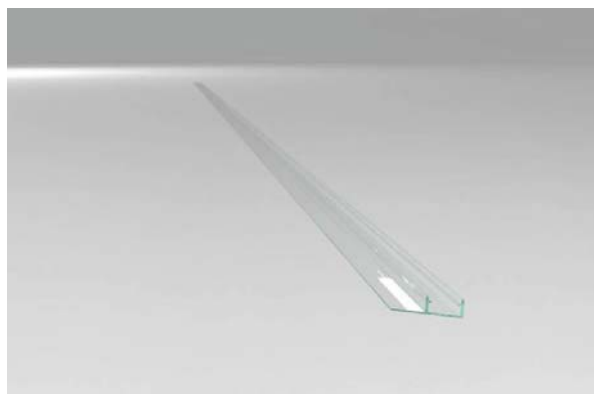
### ■ Glass without drill holes

The 8 and 10 mm glass is assembled with a gasket and the 12 mm glass is assembled with a special CLAROFLEX designed glue.



### ■ Tightness

When closed, the system is water and air tight thanks to the PVC gaskets in the vertical edges of each panel.



### ■ Options

Locks or flush handles can be installed as per the needs of each project. The system can be configured with central or side opening.



*Lock for central opening panels*

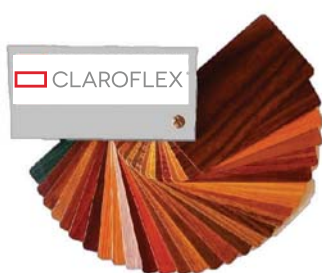


*Lock for side opening panels*

## Colours and finishes

MN STEKLO SLIDE can be anodised and lacquered in any of the existing colours on the market. Our anodised profiles have a 15 -18 microns layer. Finishes can be matte, gloss or high-gloss.

For lacquered coats you can chose any of the RAL chart colours, a personalised colour or wood-like finishes.

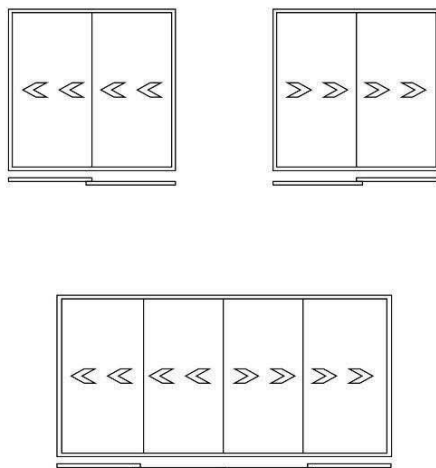




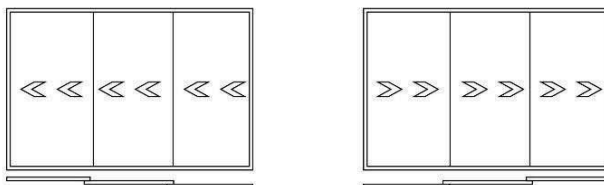
## System configurations

The possible configurations of MN STEKLO SLIDE multitrack frameless system are unlimited. Some possibilities are shown below.

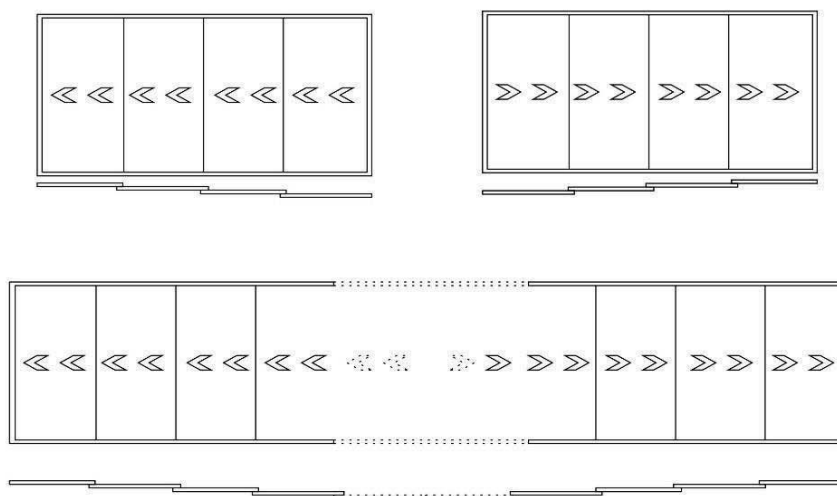
2 tracks



3 tracks

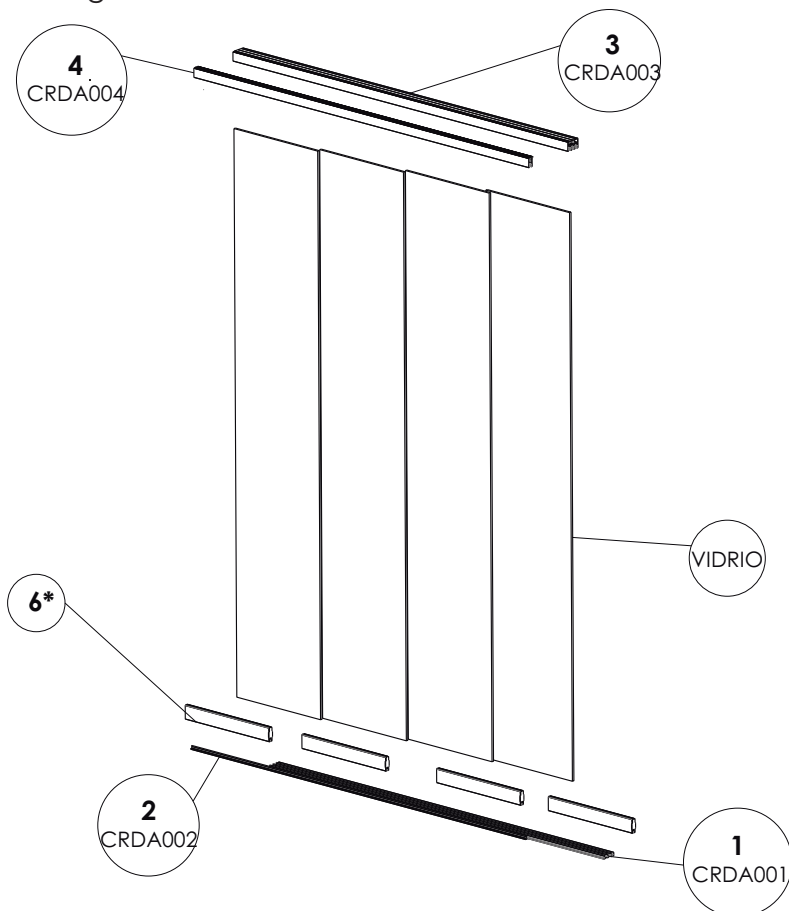


4 tracks or more



## Components and references

System detailed drawing



**6\***

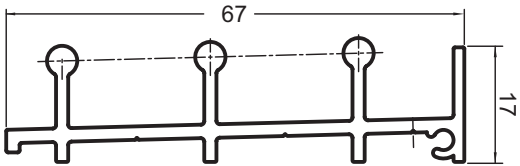
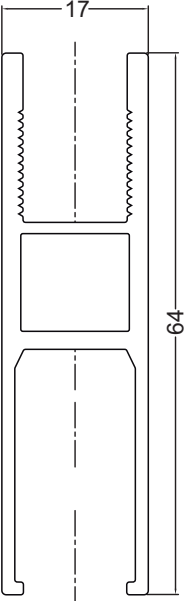
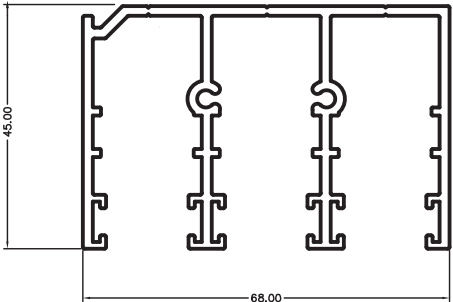
- CRDA005
- 2X CRD006
- 2X CRD007/8
- CRD0013/14

Number	Reference	Description
1	CRDA001	Bottom track
2	CRDA002	Bottom track extension
3	CRDA003	Top track
4	CRDA004	Top track extension
5	CRDA005	Panel profile
6		Profile set (PS)
7	CRD006	Double wheel carriages (PS)
8	CRD007	Simple cap (PS)
9	CRD008	Dragging cap (PS)
10	CRD0095 CRD0097	Brush 7 x 5 mm Brush 7 x 7 mm
11	CRD0010	Flexible strip 10 mm
12	CRD0012	Flexible strip 12 mm
13	CRD0013	Profile gasket 8 mm
14	CRD0014	Profile gasket 10mm
15	CRD0015	Central opening lock
16	CRD0016	Side opening lock
17	CRD0017	Panel blocker
18	CRD0018	Bubble strip
19	CRD0025	Flush Handle
20	ALU006	U end Profile

9

9

Aluminium profiles

			
Description Bottom track		Description Panel profile	
Code CRDA001		Code CRDA005	
System Multitrack system		System Multitrack system	
			
Description Top track			
Code CRDA003			
System Multitrack system			