



1. MN STEKLO FRAMELESS SYSTEM

MNSTEKLO frameless system, a practical alternative to conventional balcony glazing and standard glass curtain systems.

system works by panels sliding over the tracks without complex bearings making it the most reliable on the market.

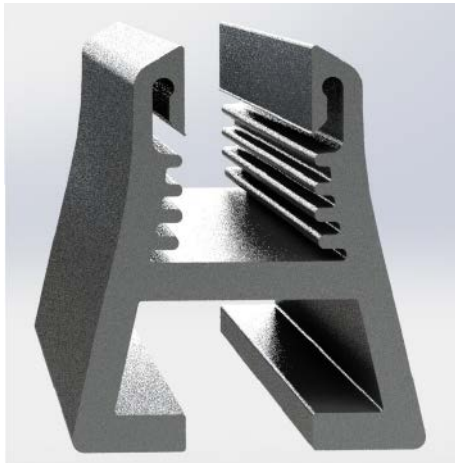
All the materials and components used by are equivalent to the leading UPVC & Aluminum brands in the market, fulfilling all quality and security requirements and standards.

We produce a reliable system based on an exquisite simplicity.

We manufacturing is fast and simple, allowing clients to accomplish high quality installations shown in the variety of different projects, in terraces, porches and hotel industry.



2. PROFILES



PANEL PROFILE

Straight, simple and solid, hides outages in installation and gluing.

Very tight glass to aluminum fixing and smaller profile size than the rest of the systems.



LEVELING TRACK

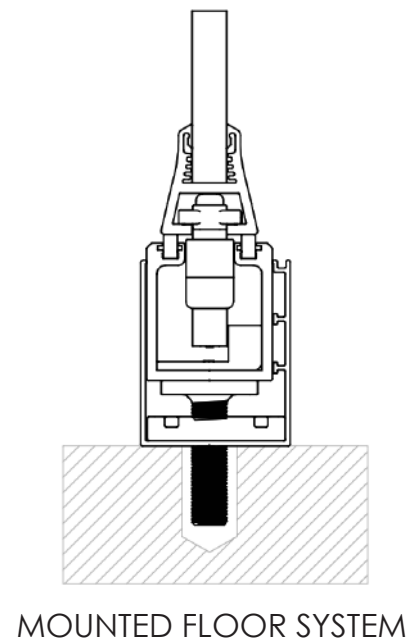
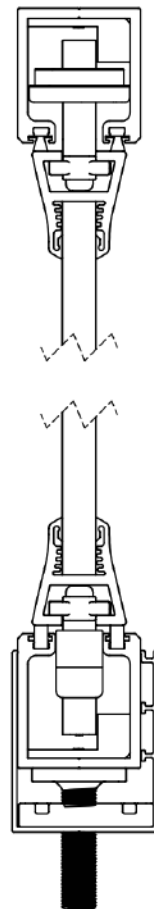
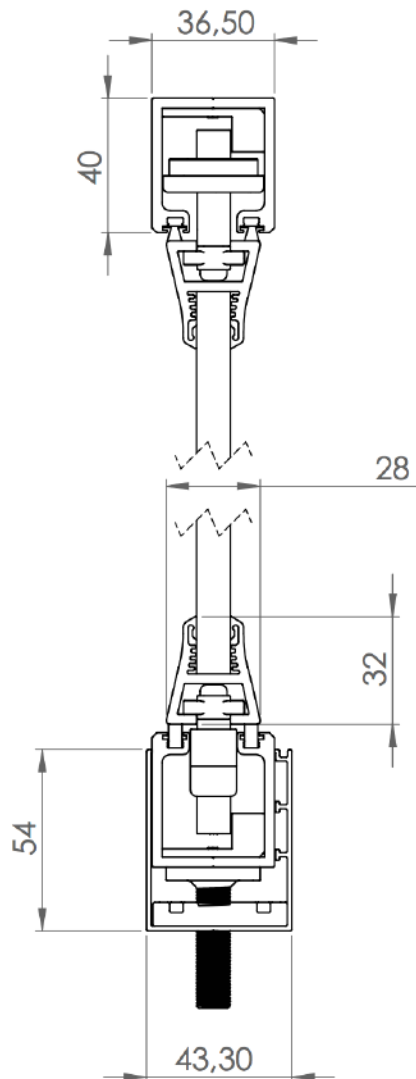
Leveling track's base is completely clear and flat open to accommodate the full surface of the leveling screw's plate, making the leveling system more stable and durable.



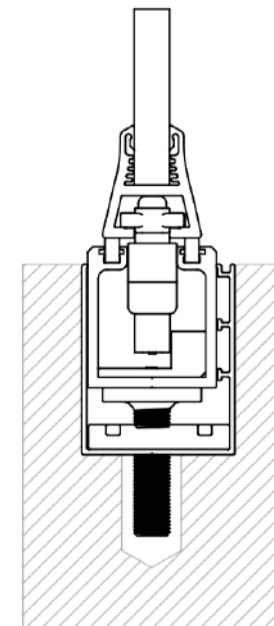
TRACK

Simple and symmetric, avoiding losses in case of errors when cutting angles in the profile.

3. SYSTEM PROFILE'S CROSS SECTIONS



SUNKEN/RECESSED SYSTEM



4. COMPONENTS

COMMON FEATURES:

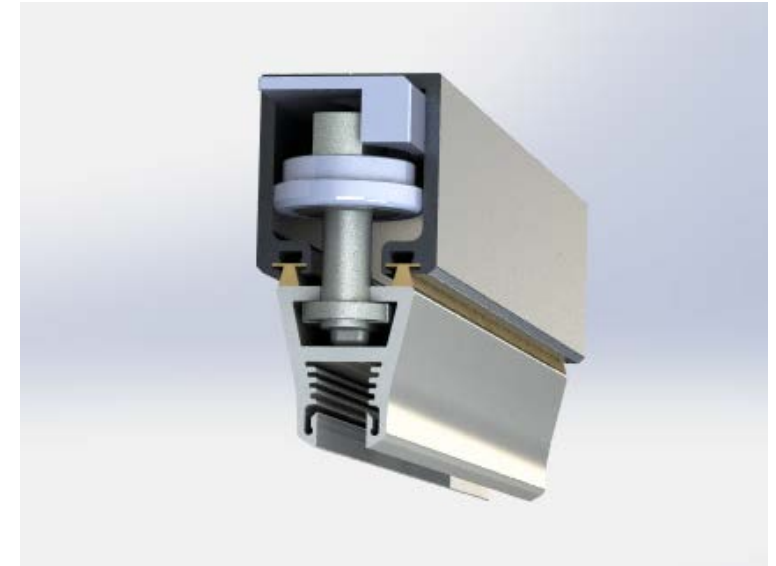
- All components are fully compatible with other systems in the market.
- Little looseness on the plastic parts to reduce vibrations.
- Long distance between axis and fixing screw for an easy installation.
- Solid design to avoid breaking and wearing due to normal use and during the installation

1. Leveling screws:

- 10 mm diameter metric, highest regulation in the market (up to 38mm with one profile, 76mm with top and bottom), solid and resistant to breakage.
- TORX head screw with 1mm pitch and 10mm metric.
- Leveling screw's plate fits along the full width of the leveling track, making the system more stable.

2. Top and bottom turning guides:

- Up to 6 mm overlap surface with the turning mechanism. Same value for the bottom one. This important overlap prevents panels falling and damages in the turning mechanism during the installation and the normal use of the product. Also it allows a better adjustment of the gap between the bottom track and the top profile so the panels can slide smoothly.



3. Top and bottom guides:

- Big dimensions to improve installation and operation.

4. Turning mechanism:

- Reinforced plastic material to avoid breaks or deformations. Three fixing holes to avoid overlapping with the fixing and leveling screws.

5. Door axis:

- Straight design with just one fixing screw for an easy installation.

6. Door pivot:

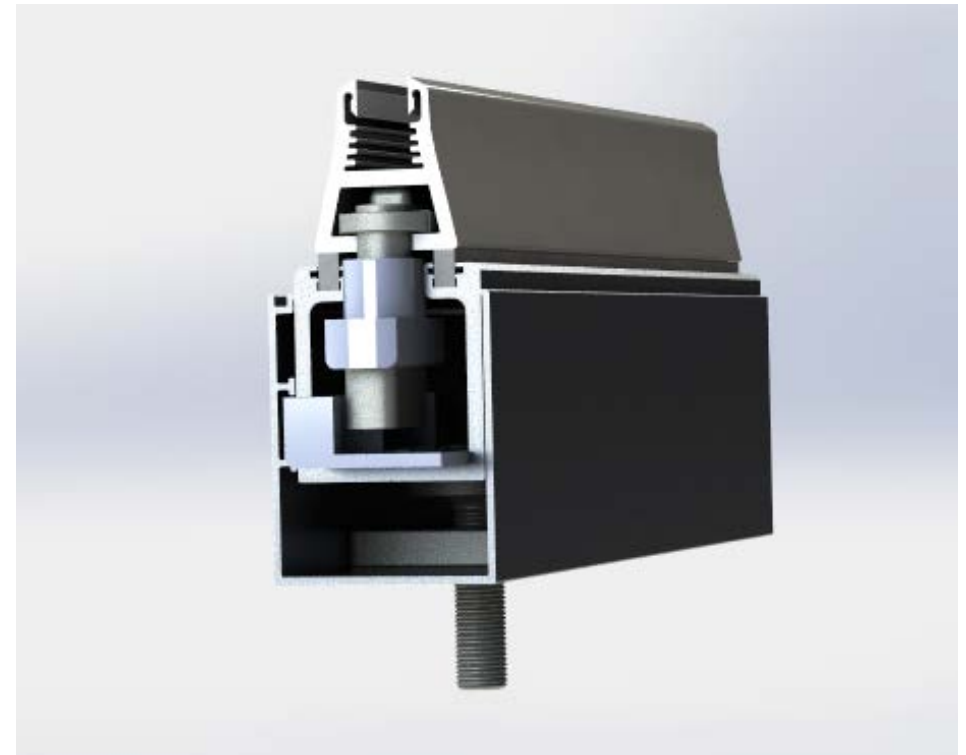
- Intuitive design, solid and with key marks for its installation.
- When the system is recessed/sunken in the floor, allows installation of the door easily and secure.
- Pass over the track joint plates and most of the fixing screws.

7. Top lock:

- Straight design, aesthetic, functional and anodized for long lasting.
- Top rod keeps in straight shape and has a new cap to avoid breaking. In case of maintenance of this lock it is very simple to repair or replace the damaged part.

8. Bottom lock:

- Simple and functional.





MN STEKLO™

MN steklo d.o.o.
PELECHOVA CESTA 15
1235 RADOMLJE
Tel: +386 31 554 888
E-mail: info@zastekli.si

<http://www.zastekli.si>